

SR42 Piezo Igniter Installation Kit

Follow the instructions at right and below to install a piezo igniter on an SR42.



1: The cabinet is shown prior to installation. The shield in front of the burners must be removed along with two burners.

Photo	Step (see further instructions under photos)
1	Remove burner shield.
2	Remove right and center burner.
3-4	Remove pilot assembly from pilot bracket on frypot.
5-6	Position bracket-mounted pilot assembly on the left side of the frypot bracket.
7	Mount the Piezo button on its bracket and position at the base of the fryer cabinet, using the two existing holes.
8	Reassembly the fryer, being attentive to the placement of the removed burners.

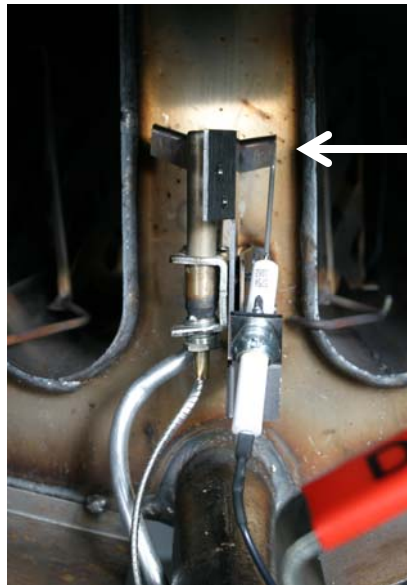
See additional photos, kit BOM on back.



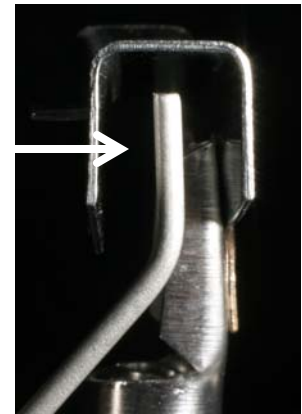
2: The burners are secured by bolts, which are visible when the shield is removed. Loosen the bolts and lift up the burners to remove.



3 - 4: Remove the existing pilot/thermocouple assembly from the bracket on the frypot and attach the assembly, with the provided screw, to the provided bracket, as shown above.



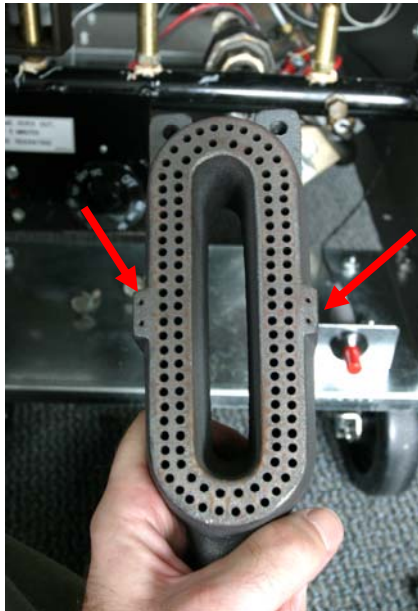
5: Attach the pilot/piezo bracket on the left side of the frypot bracket. Position the Piezo igniter as shown with the electrode probe about 1/16" below the hood and approximately equal distance from each side. (See close-up.)



6: Position the probe just inside the pilot hood, about 1/16" under the top and in the middle.



7: Mount the Piezo button to its bracket and bolt it to the fryer frame using the two holes in the right corner of the cabinet. Self-tapping screws are provided. Attach the wire connecting the button to the igniter. Route the wire away from the burner manifold.



8: Reassemble the fryer, being attentive to the placement of the burners. The center burner (above) has pilot holes on both sides. The right burner has one set of holes.



9: Fryer with piezo igniter in place.

Part No.	In PIEZO IGNITOR KIT, 826-2786	Qty
1067548	BRACKET ASSY, CE PILOT W/STUD	1
2001868	BRACKET, PIEZO LJS V90	1
8022551	LABEL,PIEZO LTG/SHUTDOWN INSTR	1
8073650	WIRE, LEAD #24-480 F	1
8090247	NUT, 8-32 HX ZP KEPS	1
8090410	SCRW,DRLL #8X1/2 PHIL PN HD ZP	2
8090475	SCRW,10-32X5/16 HX WSHR SL HD	1
8090805	SCREW, 1/4-20X1/2 HX HD	2
8101001	TRIGGER, PIEZO IGNITOR	1
8121897	ELECTRODE, #16 50/60/80	1
8196672	INSTRUCTIONS	1